

121°50'0"W 121°45'0"W 121°40'0"W 121°35'0"W 121°30'0"W 121°25'0"W 121°20'0"W

44°50'N
44°00'N
43°50'N
43°50'N
43°45'N
43°40'N
43°35'N

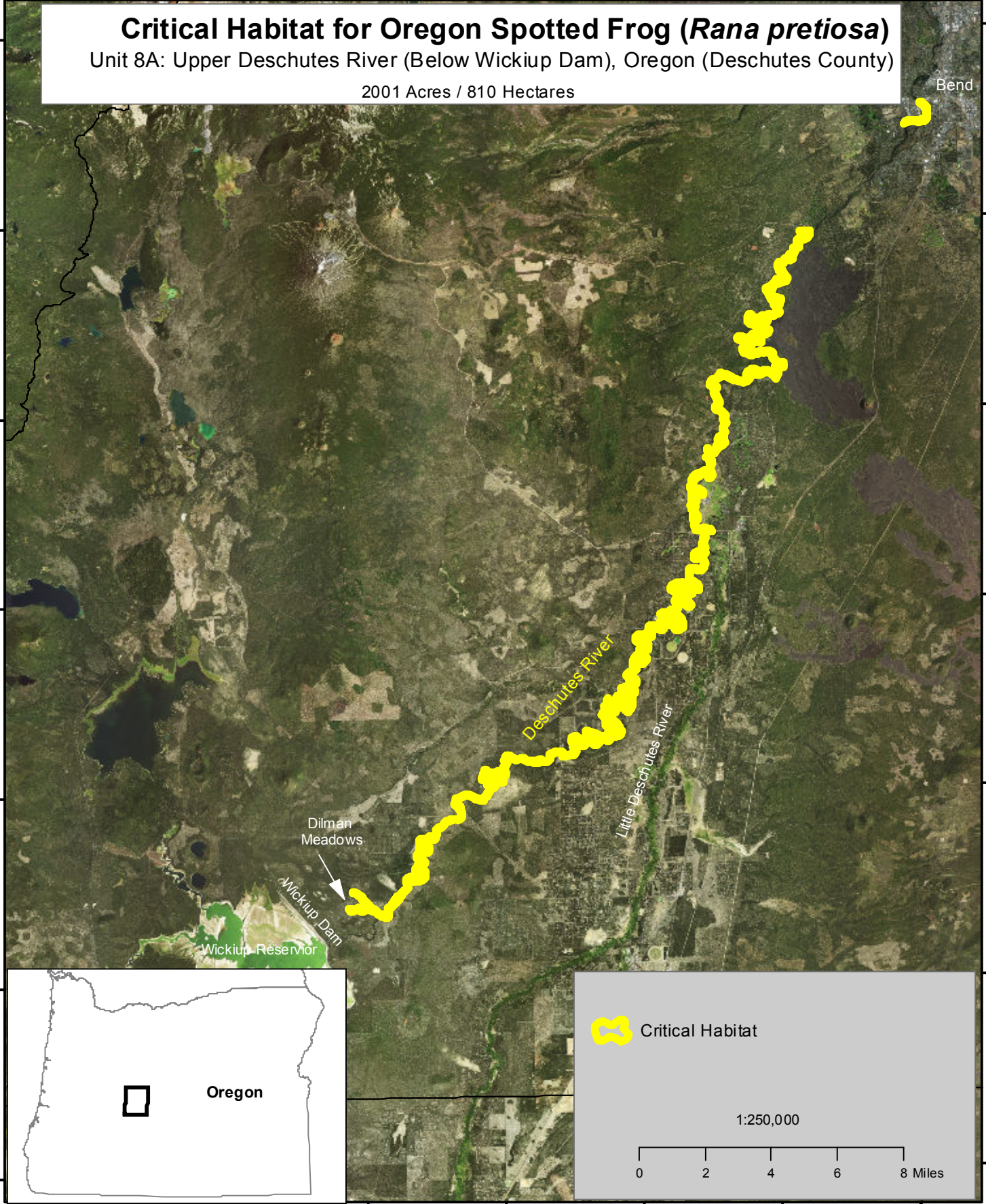
44°50'N
44°00'N
43°55'N
43°50'N
43°45'N
43°40'N
43°35'N

Critical Habitat for Oregon Spotted Frog (*Rana pretiosa*)

Unit 8A: Upper Deschutes River (Below Wickiup Dam), Oregon (Deschutes County)

2001 Acres / 810 Hectares

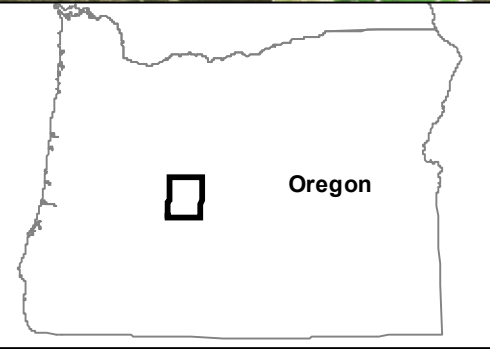
Bend



Critical Habitat

1:250,000

0 2 4 6 8 Miles



Oregon

121°50'0"W 121°45'0"W 121°40'0"W 121°35'0"W 121°30'0"W 121°25'0"W 121°20'0"W



No warranty is made by the U.S. Fish and Wildlife Service as to the accuracy, reliability, or completeness of these data for individual or aggregate use with other data. Original data were compiled from various sources. Spatial information may not meet National Map Accuracy Standards. This information may be updated without notice.



Final Critical Habitat for the Oregon Spotted Frog 2016
U.S. Fish and Wildlife Service

